

# Reels and Switches

| Description  | Page | NEC | CEC | ATEX/<br>IEC |
|--|------|-----|-----|--------------|
| <b>Cord and Cable Reels General Duty</b>           |      |     |     |              |
| 7S Continuous Swivel 7P Portable Series            | 568  | X   | X   |              |
| <b>Cord and Cable Reels Heavy Duty</b>             |      |     |     |              |
| RL5000 Heavy Duty Commercial Industrial Cord Reels | 570  | X   | X   |              |
| <b>Ordinary Location Powercords</b>                |      |     |     |              |
| McGill™ Extension Cords                            | 574  | X   |     |              |
| McGill™ Nyloc Safety Grip Plugs Connectors         | 575  | X   |     |              |
| McGill™ Ground Fault Circuit Interrupters          | 576  | X   | X   |              |
| McGill™ Sensing–Safti–Gard Motor Controls          | 577  | X   | X   |              |
| McGill™ LOCKBOX Electrical Plug Lockout            | 578  | X   | X   |              |
| <b>Ordinary Location Switches</b>                  |      |     |     |              |
| McGill™ 0852 0862 Rocker Switches                  | 574  | X   | X   |              |
| McGill™ 0801 0821 0811 0831 Rocker Switches        | 575  | X   | X   |              |
| McGill™ 0851 0861 Lighted Rocker Switches          | 576  | X   | X   |              |
| McGill™ 4125 90 Single Pole Toggle Switches        | 577  | X   | X   |              |
| McGill™ 0121 0140 Multi Pole Toggle Switches       | 578  | X   | X   |              |
| McGill™ Momentary Contact Pushbutton Switches      | 597  | X   | X   |              |
| McGill™ Switches Parts Accessories                 | 598  | X   | X   |              |



7S Series



RL5000 Series



Extension Cords



Plug Connector



GFCI



LOCKBOX



0852/0862 Series



0801/0821 and  
0811/0831 Series



0851/0861 Series



4125/90 Series



0121/0140 Series



Momentary Contact  
Pushbutton

# 7S Continuous Swivel 7P Portable Series

## Available with or without handlamps

Furnished with 18-3 (2 wire plus safety ground) yellow SJOOW-A cord.

**NEC/CEC:**  
Listed for Ordinary Locations

### Applications

- A safe and convenient source of retractable power cord for:
  - Portable lighting
  - Power supply
  - General utility service

### Features

- 7S and 7SV Series
  - Enclosed construction.
  - Furnished with 7.6 meters (25 feet) of yellow, extra flexible, 18-3 SJOOW-A cord (2-conductor plus safety ground).
  - High quality, double copper brushes.
  - Locking ratchet holds cord at desired length.
  - Adjustable ball stop controls return limit of retractable cord.
  - Hubs in all covers have integral bushings to protect conductor insulation from damage. Hub plate openings are smooth.
  - Continuous 360° patented swiveling action without power interruption or tangling of cord.
  - 7S Series offers choice of hand-lamps available as accessories.
  - 7SV Series includes NEMA 4X (enclosed and gasketed) handlamp to accommodate up to 100 Watt lamp, 6.1 meters (20 feet) of SJOOW-A cord.
  - Models available with built-in automatic switch which activates light when cord is pulled out.
  - Convenient flush type mounting ring fits 4" octagonal outlet box or fuse bracket.
  - Accessory bracket permits wall mounting.
  - Supplied with handlamp to accommodate up to 100 Watt lamp.

### Standard Materials

- Reels: steel construction
- Cord: type SJOOW-A, yellow thermoset jacket, oil-resistant, 300 Vac rating

### Standard Finishes

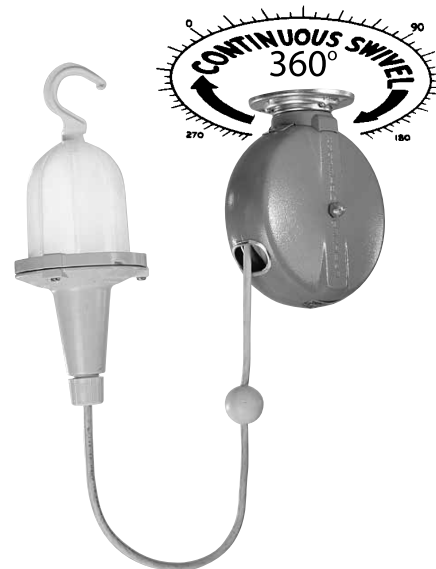
- Gray hammer epoxy/polyester powder coat

### NEC/CEC Certifications and Compliances

- UL Listed: E4961
- UL Standard: 355
- CSA Listed: LR3060
- Meets OSHA requirements



7S Series



7SV Series

# 7S Continuous Swivel 7P Portable Series



Available with or without handlamps

Furnished with 18-3 (2 wire plus safety ground) yellow SJOOW-A cord.

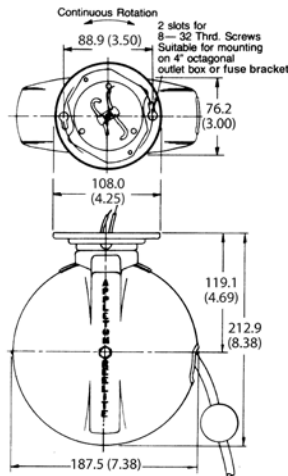
**NEC/CEC:**  
Listed for Ordinary Locations

| Description   | Cord Length<br>Meters (Feet) | Cord Size    | Rating<br>Amp/Voltage | Catalog<br>Number |
|---|------------------------------|--------------|-----------------------|-------------------|
| <b>7S continuous swivel, grounded Reelite™</b>  |                              |              |                       |                   |
| Less handlamp. Max. accessory weight: 560 grams (20 oz).<br>Handlamps ① available. Furnished with yellow SJOOW-A cord and RE-FB4 fuse bracket assembly. | 7.6 (25)                     | 18-3 SJOOW-A | 4 Amp, 125 Vac        | <b>RE-7S2G</b>    |

## Accessories

| Description  | Catalog Number  |
|--|-----------------|
|  <p><b>Ball Stop</b><br/>Yellow 2-piece split design permits installation without disconnecting handlamp or receptacle on end of cord. Made of polypropylene. Installs on SJOOW-A cord used on all Appleton portable reels.</p> | <b>RE-PBS-1</b> |
|  <p><b>Handlamps</b><br/>Handlamps are available as optional accessories. For ordering information refer to the <i>Lighting: Portable Lighting Section</i></p>  |                 |

## Dimensions in Millimeters (Inches)



① See *Lighting section, Portable Lighting*.

# RL5000 Heavy Duty Commercial Industrial Cord Reels

**NEC/CEC:**  
Listed for Ordinary Locations

## Applications

- Commercial/industrial, 15.2 meter (50 foot) portable cord reel to safely transfer a continuous retractable power supply, portable lighting or general utility service.
- All steel construction for dry location application and suitable for base down, ceiling or wall mounting.
- Typical applications include industrial/MRO, warehouse, loading docks, commercial building, OEM machinery and equipment, OSHA regulated service garages, muffler and oil change shops, institutions and state agencies.
- Design options for single or three phase power source 250 Vac maximum and supplied with #16 or #14 gauge three conductor or #14 gauge four conductor SJOOW-A, 300 Vac cord.

## Features

- All steel construction provides added strength for rugged commercial/industrial dry location service.
- Available in 15.2 meter (50 foot)/ #16 gauge- 3 conductor, 15.2 meter (50 foot) #14 gauge- 3 conductor, and 13.7 meter (45 foot) #14 gauge- 4 conductor. All with high visibility, yellow 300 Vac jacket, UL and CSA approved oil resistant thermoset cord.
- Collector ring and brush assembly rated at 15 Amp, 250 Vac, three conductor (single phase) and four conductor (three phase) construction.
- 0.9 meter (3 foot) lead in power cord provides portable connection installation.
- Compact design offers long cable capacity in a small unit, advantageous to the OEM manufacturers.
- Overhung drum design offers simple field cable tension adjustment without cable disconnection.
- Adjustable cable guide provides for various reel mounting positions.
- Cable locking ratchet (included as standard) holds cable at desired length. Ratchet can be disengaged when constant cable tension is desired.
- Power is automatically turned off when all cable is retracted back into the reel.

## Standard Materials

- Base, drum, spring cartridge cover and cable guide arm: steel
- Brush cover: aluminum
- Cable outlet guide: Acetal
- Collector rings: brass
- Brushes: high density copper graphite
- Cord: high visibility yellow type SJOOW-A thermoset, 300 Vac rating

## Standard Finishes

- Base and housing: gray hammer epoxy/polyester powder coat
- Drum: black epoxy powder coat




## NEC/CEC Certifications and Compliances



- UL Listed: E4961
- UL Standard: 355
- Reels with handlamps are UL Listed.
- Reels without handlamps are UL Recognized Components.
- CSA Listed: LR3060

# RL5000 Heavy Duty Commercial Industrial Cord Reels

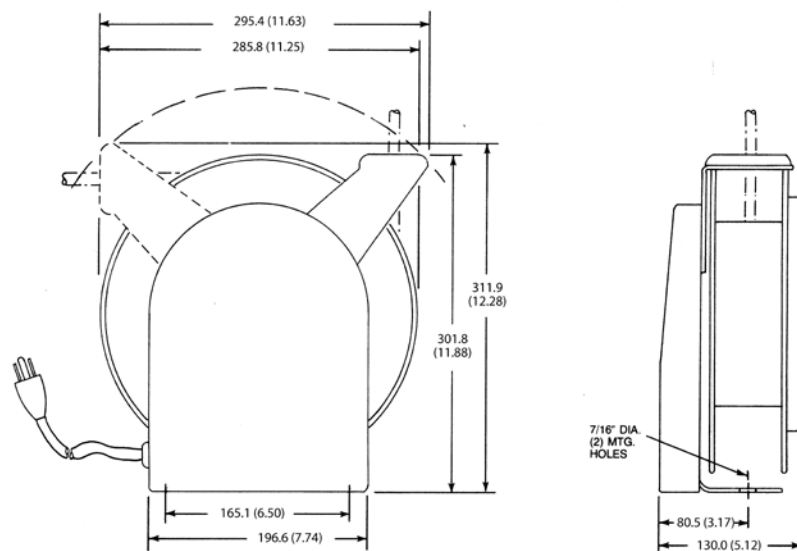
NEC/CEC:  
Listed for Ordinary Locations

|   | Description   | Cord Length<br>Meters (Feet) | Cord Size | Rating          | Catalog<br>Number |
|---|---|------------------------------|-----------|-----------------|-------------------|
|  | <b>Portable grounded cord reel</b>                  |                              |           |                 |                   |
|   | With locking ratchet ①. No handlamp or accessories. | 15.2 (50)                    | 16-3      | 9 Amp, 125 Vac  | <b>RL5360</b>     |
|   | With locking ratchet ①. No handlamp or accessories. | 15.2 (50)                    | 14-3      | 13 Amp, 125 Vac | <b>RL5340</b>     |
|   | With locking ratchet ①. No handlamp or accessories. | 13.7 (45)                    | 14-4      | 11 Amp, 250 Vac | <b>RL5440</b>     |

## Accessories

|   | Description  | Weight Each Grams (oz) | Catalog Number  |
|---|--|------------------------|-----------------|
|   | <b>Power outlet box</b>  |                        |                 |
|   | Non-conductive rubber and plastic construction with two-duplex 3-wire, 15 Amp, 125 Vac receptacles. Cable range: .325"-.655" | 553.0 (19.50)          | <b>RE-PPB</b>   |
|  | <b>Shock-absorbing ball stop</b>   | —                      | <b>RE-PBS-2</b> |

## Dimensions in Millimeters (Inches)



① See the Appleton™ Light Catalog for additional handlamp options.

# McGill™ 8600 AUTO-LOC Cord Reels

NEC/CEC:  
Listed for Ordinary Locations

## Applications

- Weather-tight, dust-tight construction for heavy-duty industrial applications.
- Ideal for hoists, electric tools, and moving equipment.

## Features

- Corrosion resistant.
- Sufficient spring tension to provide no more than 10% sag when cable is stretched horizontally.
- Fully adjustable four roller cable guide to minimize cable wear.
- Long life, self-contained mainspring.
- Furnished with black SO cable 3 and 4 conductors.
- Models available with and without handlamp.
- Removable ratchet for application flexibility.
- 30 Amp, 600 V modular collector ring designed for long service life.
- 330° pivot bases available.
- 1" NPT line entry in junction box.



## Standard Materials

- Aluminum die cast/yellow polyester powder coat

## NEC/CEC Certifications and Compliances

- UL Listed: E53326
- UL Standard: 355
- CSA Approved
- NEMA 4

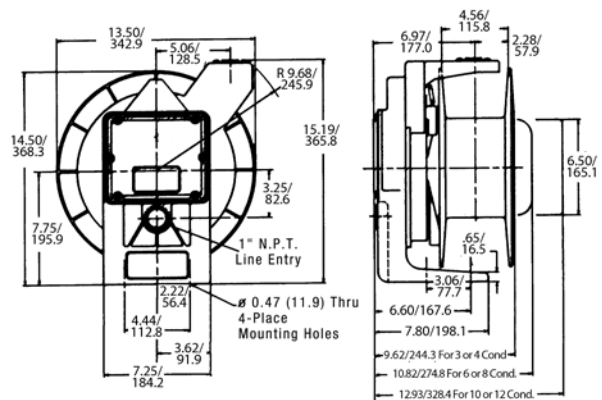
REELS AND SWITCHES/CORD AND CABLE REELS: WEATHER PROTECTED

| SO Cord Type | Rating ① | Catalog Numbers   |                   |                   |                  |                  |
|--------------|----------|-------------------|-------------------|-------------------|------------------|------------------|
|              |          | 15.2 m (50') Cord | 13.7 m (45') Cord | 10.7 m (35') Cord | 9.1 m (30') Cord | 7.6 m (25') Cord |
| 16/4         | 7 Amp    | <b>8638</b>       | —                 | —                 | <b>8634</b>      | —                |
| 16/3         | 9 Amp    | <b>8628</b>       | —                 | —                 | —                | —                |
| 14/4         | 11 Amp   | —                 | <b>8667</b>       | —                 | —                | <b>8663</b>      |
| 14/3         | 13 Amp   | <b>8658</b>       | —                 | —                 | —                | —                |
| 12/4         | 14 Amp   | —                 | —                 | —                 | <b>8694</b>      | —                |
| 12/3         | 18 Amp   | —                 | —                 | <b>8685</b>       | —                | —                |

## Accessories and Replacement Parts

| Description  | Catalog Number  |
|--|-----------------|
| Ball stop for 8600 series cord reels (sold separately) | <b>8600-001</b> |

## Dimensions in Millimeters (Inches)



□ Cord reel with handlamp rated at 125 Vac.

# McGill™ 8700 AUTO-LOC Heavy Duty Cord Reels

**NEC/CEC:**  
Listed for Ordinary Locations

## Applications

- Weather-tight, dust-tight construction for heavy-duty industrial applications
- Ideal for hoists, electric tools, and moving equipment

## Features

- Weather-tight, dust-tight construction for heavy-duty industrial applications.
- Corrosion resistant.
- Sufficient spring tension to provide no more than 10% sag when cable is stretched horizontally.
- Fully adjustable four roller cable guide to minimize cable wear.
- Long life, self-contained mainspring.
- Furnished with black SO cable up to 12 conductors.
- Removable ratchet for application flexibility.
- 30-75 Amp, 600 V modular collector ring designed for long service life.
- 330° pivot bases available for 2-6 conductor reels.
- 1" NPT line entry in junction box.

## Standard Materials

- Heavy gauge steel/yellow powder polyester coat
- 8701-8712 die cast aluminum



## NEC/CEC Certifications and Compliances

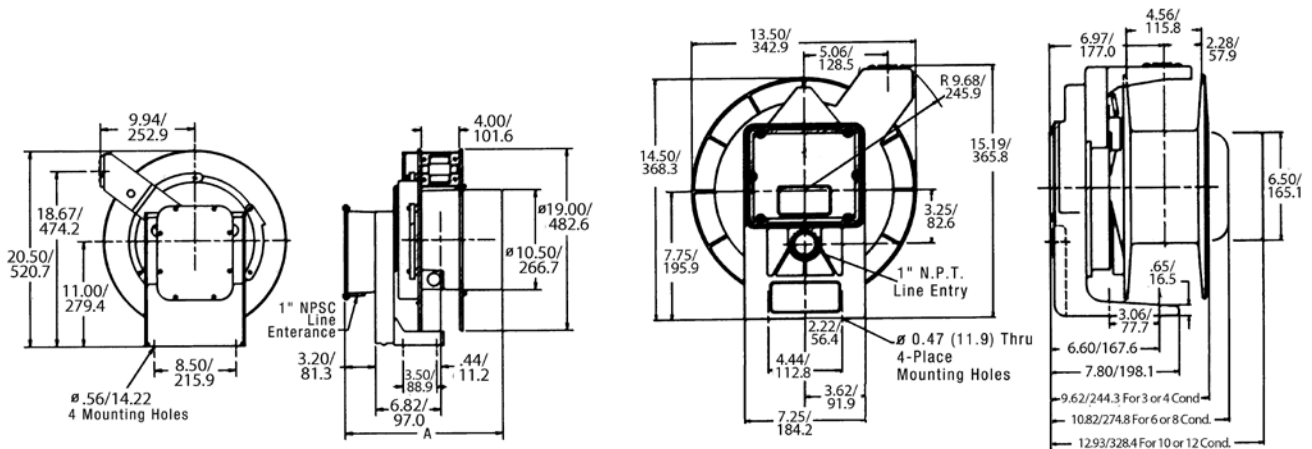
- 8706 and 8707 models are UL Listed: E53326
- UL Standard: 355
- 8706 and 8707 models are CSA Certified
- NEMA 4

| SO Cord Type | Rating | Catalog Numbers   |                   |                   |
|--------------|--------|-------------------|-------------------|-------------------|
|              |        | 21.3 m (70') Cord | 15.2 m (50') Cord | 12.2 m (40') Cord |
| 12/4         | 14 Amp | —                 | —                 | 8707              |
| 12/3         | 18 Amp | 8729              | 8706              | —                 |

## Accessories and Replacement Parts

| Description  | Catalog Number |
|--|----------------|
| <b>Ball stops</b><br>For reels with 16 ga.; 14 ga. 3, 4, and 6 conductor; 12 ga. 3 and 4 conductor; 10/3 cord (cord dia. .430-.750") | 8600-001       |

## Dimensions in Millimeters (Inches)



8701-8712 Series

8713-8747 Series

# McGill™ Extension Cords

**NEC:**  
Listed for Ordinary Locations

## Applications

- Heavy-duty industrial grade cords withstand rough use.

## Features

- Yellow thermoplastic SJTW and STO cords and plugs resist oil and other corrosive elements.
- Available in a variety of lengths and sizes.
- SJOW — Junior hard service, 300 Volt, oil-resistant, all-weather cord.
- SJTW — Junior hard service, 300 Volt, thermoplastic, all-weather cord.
- STO — Hard service, 600 Volt, thermoplastic, oil-resistant cord.

## NEC Certifications and Compliances

- UL Listed: E22006
- Meets OSHA requirements



5351-0623

| Cord Type ① | Catalog Numbers    |                     |                     |                       |
|-------------|--------------------|---------------------|---------------------|-----------------------|
|             | 7.6 m (25') Length | 15.2 m (50') Length | 22.9 m (75') Length | 30w.5 m (100') Length |
| 16/3-SJTW   | 5351-0623 ②        | 5351-0653 ②         | 5351-0673           | 5351-0613             |
| 14/3-STO    | 5351-0423          | —                   | 5351-0473           | —                     |
| 14/3-SJOW   | —                  | 5351-0453           | —                   | 5351-0413             |
| 12/3-STO    | 5351-0223          | —                   | 5351-0273           | —                     |
| 12/3-SJOW   | —                  | 5351-0253           | —                   | 5351-0213             |

① Cord supplied may be equivalent or better than listed.

② Cords with molded plugs. All others have yellow 515P plugs and 515C connectors attached.



# McGill™ Nyloc Safety Grip Plugs Connectors

**NEC:**  
*Listed for Ordinary Locations*

## Applications

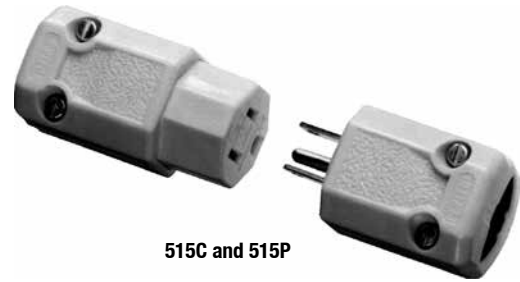
- Ideal for fast, easy wiring.

## Features

- Durable yellow nylon construction with nylon cord grip eliminates need for exposed metal, enhancing safety and durability.
- Non-metallic cord grips.

## Certifications and Compliances

- UL Listed: E44590
- Meets OSHA requirements
- Meets NEMA and ANSI specifications



515C and 515P

| Description                             | Rating          | Catalog Number |
|---|-----------------|----------------|
| 2 pole; 3 wire straight blade plug      | 15 Amp, 125 Vac | 515P           |
| 2 pole; 3 wire straight blade connector | 15 Amp, 125 Vac | 515C           |

APPLETON™ OZ/GEDNEY™

REELS AND SWITCHES: ORDINARY LOCATION POWERCORDS

# McGill™ Ground Fault Circuit Interrupters

NEC/CEC:  
Listed for Ordinary Locations

## Applications

- Protects people and equipment by interrupting electrical power when loads have a potentially lethal ground current in excess of 6 milliamps.
- The portable construction enables use of these devices in a variety of applications, such as power tools or hand lamps.
- Indoor/Outdoor usage.



## Features

- Manual reset is required after trip (fault) condition or power outage occurs to prevent unmonitored equipment start-up.
- 15 and 20 Amp, 120 and 240 Volt, 60 Hz models available.
- 4-6 milliamp trip level.
- Provides protection in 3 wire circuits.
- Mechanical trip indicator to show power "ON".
- Rugged construction for long lasting durability.
- Grounded neutral — 4 ohms typical.
- Open neutral protection.
- Radio frequency interference suppression to protect against nuisance tripping.

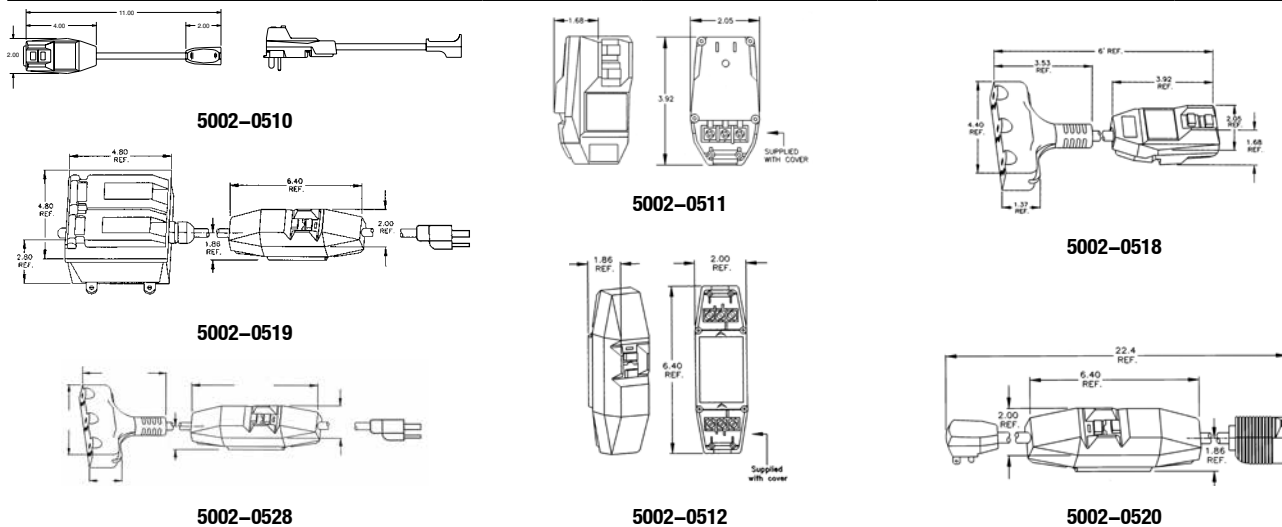


## NEC/CEC Certifications and Compliances

- UL Listed: E165783
- CSA Approved

|  | NEMA Configuration Number | Rating                     | Catalog Number |
|--|---------------------------|----------------------------|----------------|
| GFCI cord set, 274 mm (11") long                               | 5-15P/R                   | 15 Amp, 120 Vac            | 5002-0510      |
| User attachable GFCI portable power plug                       | 5-15P                     | 15 Amp, 120 Vac            | 5002-0511      |
| User attachable in-line GFCI, dual voltage                     | —                         | 15 - 20 Amp, 120 - 240 Vac | 5002-0512      |
| GFCI cord set, 1.83 m (6') long with tri-tap receptacle        | 5-15P/R                   | 15 Amp, 120 Vac            | 5002-0518      |
| GFCI protected quad box ①                                      | 5-20P/R                   | 20 Amp, 120Vac             | 5002-0519      |
| In-line GFCI with plug and receptacle attached                 | 5-15P/R                   | 15 Amp, 120 Vac            | 5002-0520      |
| In-Line GFCI with plug and tri-tap molded power block attached | 5-15P/R                   | 15 Amp, 120 Vac            | 5002-0528      |

## Dimensions in Inches/Millimeters



① 2 of the 4 receptacles are T-slotted to allow both 15 and 20 amp tools, with either NEMA 5-15 or 5-20 plugs.

# McGill™ Sensing–Safti–Gard Motor Controls

**NEC/CEC:**  
Listed for Ordinary Locations

## Applications

- These motor controls help prevent accidental machine start up after a voltage drop or power interruption.
- It is intended for installation on equipment that is driven by a small electrical motor, operating on 120 Vac or 240 Vac (single phase) and is connected to electrical power by means of 14 gauge, 3 wire flexible cord.
- Upgrades small machines to the latest safety requirements by preventing automatic restart accidents following voltage drop or power interruption.
- Replaces old, frayed, dangerous, and ungrounded power cords.

## Features

- An added sensor won't allow the Sensing-Safti-Gard to reset until your equipment switch has been turned off.
- Permits use of machine ON/OFF switch.
- Easy installation.
- Meets OSHA, NEC, and NFPA safety standards.

## NEC/CEC Certifications and Compliances

- UL and cUL Recognized
- UL Listed: E78258



506

|   | Electrical Rating  | Catalog Number |
|---|--|----------------|
| 508 mm (20") cord on equipment switch end;<br>2.44 m (8') cord w/molded plug on power end | 120 Vac, 15 Amp,<br>3/4 HP motor max., 50/60 Hz                  | 506            |
| 508 mm (20") cord on equipment switch end;<br>2.44 m (8') cord on power end (no plug)     | 120 Vac, 18 Amp,<br>1 HP motor max., 50/60 Hz                    | 507            |
| 508 mm (20") cord on equipment switch end;<br>2.44 m (8') cord on power end (no plug)     | 200-240 Vac, 15 Amp (single phase),<br>2 HP motor max., 50/60 Hz | 508            |
| 356 mm (14") cord on male plug end;<br>305 mm (12") cord on female receptacle end         | 120 Vac, 15 Amp,<br>3/4 HP motor max., 50/60 Hz                  | 509            |

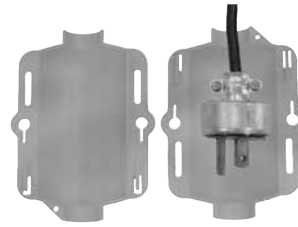
*There is no direct replacement for previous Catalog Number 505, as the new case size does not allow it to be plugged into a duplex type outlet. Choose Catalog Number 506 or, for new machines with a good power cord, choose Catalog Number 509.*

# McGill™ LOCKBOX Electrical Plug Lockout

NEC/CEC:  
Rated for Ordinary Locations

## Applications

- Provides a positive lockout of the plug for cord connected electrical equipment when performing maintenance and service activities.
- LOCKBOX is a lockable enclosure that allows personnel to work safely and confidently on electrical equipment without fear of unexpected or unauthorized start-up.



## Features

- Provisions for up to two locks.
- Accepts padlocks up to 3/8" shackle diameter.
- OSHA compliant when installed according to instructions.
- Indoor or outdoor use.
- Highly visible, safety yellow body.
- Holes for optional I.D. tag to indicate ownership.

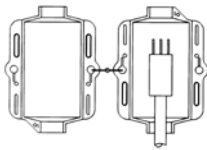
## Standard Materials

- High impact U.V. polymer

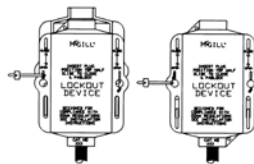
| Description                     | Catalog Number |
|---------------------------------|----------------|
| LOCKBOX Electrical Plug Lockout | 5005-0530      |

## Illustrated Features

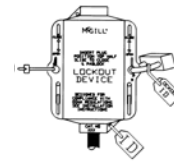
### Easy to Use



1. Open LOCKBOX

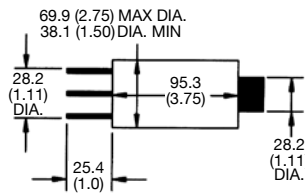


2. Close and Slide



3. Lock and tag

## Dimensions in Millimeters (Inches)



Recommended maximum plug size (inches)

# McGill™ 0852/0862 Series Rocker Switches

NEC/CEC:  
Listed for Ordinary Locations

## Applications

- The 0852/0862 Series rocker switches are available in single pole (0852) and double pole (0862), unlighted and lighted models. These switches are equipped with nylon snap-in brackets. They are Vac rated switches also suitable for low voltage Vdc applications.

## Features

- Designed to fit full-size rectangular cutouts. Angled corners are suggested for optimum fit, but standard rectangular cutouts are acceptable.
- Curved rockers with illuminated single or dual lens to fit your style and functional requirements.
- 1/4" Quick connect terminals standard on all switches.
- Rocker style: curved/smooth face matte.
- Bracket style: smooth face matte.
- 125 Vac Incandescent lamp.
- 12 Vdc or 28 Vdc Neon lamp.

## Standard Materials

- Contacts: silver plate
- Terminals: brass or copper
- Base: phenolic +150 °C (+302 °F)
- Rocker/bracket: nylon 66 +105 °C (+221) °F

## NEC/CEC Certifications and Compliances

- UL Recognized Component
- UL File Number: E335442
- UL Standard: 1054, Guide WORY2
- CSA File Number: 249055
- CSA Standard: C22.2 No. 55
- RoHS Compliant



REELS AND SWITCHES: ORDINARY LOCATION SWITCHES

APPLETON™ OZ/GEDNEY™

| Circuitry                   |     |     | Rocker Color | Lamp Voltage ① | Poles | Single Pole                        |                   | Double Pole |                                    |                   |
|-----------------------------|-----|-----|--------------|----------------|-------|------------------------------------|-------------------|-------------|------------------------------------|-------------------|
| A                           | B   | C   |              |                |       | Rating                             | Catalog Number    | Poles       | Rating                             | Catalog Number    |
| <b>Non-lighted versions</b> |     |     |              |                |       |                                    |                   |             |                                    |                   |
| ON                          | —   | OFF | White        | —              | SPST  |                                    | <b>0852-0001N</b> | DPST        |                                    | <b>0862-0001N</b> |
| ON                          | OFF | ON  | White        | —              | SPDT  |                                    | <b>0852-0002N</b> | DPDT        |                                    | <b>0862-0002N</b> |
| ON                          | —   | ON  | White        | —              | SPST  |                                    | <b>0852-0003N</b> | DPST        |                                    | <b>0862-0003N</b> |
| (ON)                        | —   | OFF | White        | —              | SPST  |                                    | <b>0852-0004N</b> | DPST        |                                    | <b>0862-0004N</b> |
| ON                          | —   | OFF | Black        | —              | SPST  |                                    | <b>0852-0011N</b> | DPST        |                                    | <b>0862-0011N</b> |
| ON                          | OFF | ON  | Black        | —              | SPDT  | 15 Amp, 125 Vac<br>10 Amp, 250 Vac | <b>0852-0012N</b> | DPDT        | 15 Amp, 125 Vac<br>10 Amp, 250 Vac | <b>0862-0012N</b> |
| ON                          | —   | ON  | Black        | —              | SPST  | 3/4 HP, 125-250 Vac                | <b>0852-0013N</b> | DPST        | 3/4 HP, 250 Vac                    | <b>0862-0013N</b> |
| (ON)                        | —   | OFF | Black        | —              | SPST  |                                    | <b>0852-0014N</b> | DPST        |                                    | <b>0862-0014N</b> |
| ON                          | —   | OFF | Red          | —              | SPST  |                                    | <b>0852-0021N</b> | DPST        |                                    | <b>0862-0021N</b> |
| ON                          | OFF | ON  | Red          | —              | SPDT  |                                    | <b>0852-0022N</b> | DPDT        |                                    | <b>0862-0022N</b> |
| ON                          | —   | ON  | Red          | —              | SPST  |                                    | <b>0852-0023N</b> | DPST        |                                    | <b>0862-0023N</b> |
| (ON)                        | —   | OFF | Red          | —              | SPST  |                                    | <b>0852-0024N</b> | DPST        |                                    | <b>0862-0024N</b> |

( ) Momentary. Poles: SP = single pole, DP = double pole, ST = single throw, DT = double throw.

① Lamp voltage determines switch voltage rating.

**Shaded catalog numbers are normally stocked items. All other items are made to order. Contact your local sales representative for pricing.**

# McGill™ 0852/0862 Series Rocker Switches

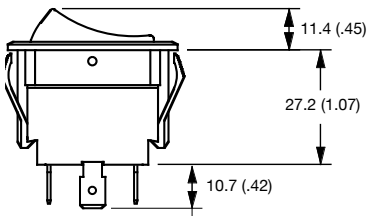
NEC/CEC:  
Listed for Ordinary Locations

REELS AND SWITCHES: ORDINARY LOCATION SWITCHES

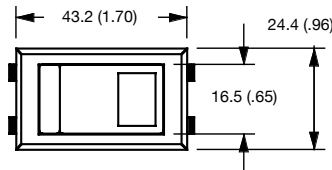
APPLETON™ OZ/GEDNEY™

| Circuitry               |     |     | Rocker/<br>Lens Color | Lamp Voltage ① | Poles | Single Pole     |                     | Double Pole |                     |
|-------------------------|-----|-----|-----------------------|----------------|-------|-----------------|---------------------|-------------|---------------------|
| A                       | B   | C   |                       |                |       | Rating          | Catalog Number      | Rating      | Catalog Number      |
| <b>Lighted versions</b> |     |     |                       |                |       |                 |                     |             |                     |
| ON                      | —   | OFF | White/Clear           | 125 Vac        | SPST  |                 | <b>0852-1101N</b>   | DPST        | <b>0862-1101N</b>   |
| ON                      | —   | OFF | White/Red             | 125 Vac        | SPST  |                 | <b>0852-1301N</b>   | DPST        | <b>0862-1301N</b>   |
| ON                      | —   | OFF | White/Green           | 125 Vac        | SPST  |                 | <b>0852-1401N</b>   | DPST        | <b>0862-1401N</b>   |
| ON                      | —   | OFF | Black/Clear           | 125 Vac        | SPST  |                 | <b>0852-1111N</b>   | DPST        | <b>0862-1111N</b>   |
| ON                      | —   | OFF | Black/Red             | 125 Vac        | SPST  | 15 Amp, 125 Vac | <b>0852-1311N</b>   | DPST        | <b>0862-1311N</b>   |
| ON                      | —   | OFF | Black/Green           | 125 Vac        | SPST  | 10 Amp, 250 Vac | <b>0852-1411N</b>   | DPST        | <b>0862-1411N</b>   |
| ON                      | —   | OFF | Red/Clear             | 125 Vac        | SPST  | 1/2 HP, 125 Vac | <b>0852-1121N</b>   | DPST        | <b>0862-1121N</b>   |
| ON                      | —   | OFF | Red/Red               | 125 Vac        | SPST  | 1/2 HP, 250 Vac | <b>0852-1321N</b>   | DPST        | <b>0862-1321N</b>   |
| ON                      | —   | OFF | Black/Clear           | 12 Vdc         | SPST  |                 | <b>0852-4111N</b> ② | DPST        | <b>0862-4111N</b> ② |
| ON                      | —   | OFF | Black/Red             | 12 Vdc         | SPST  |                 | <b>0852-4311N</b> ② | DPST        | <b>0862-4311N</b> ② |
| ON                      | —   | OFF | Black/Clear           | 28 Vdc         | SPST  |                 | <b>0852-5111N</b> ② | DPST        | <b>0862-5111N</b> ② |
| ON                      | —   | OFF | Black/Red             | 28 Vdc         | SPST  |                 | <b>0852-5311N</b> ② | DPST        | <b>0862-5311N</b> ② |
| ON                      | OFF | ON  | White/Clear           | 125 Vac        | SPDT  |                 | <b>0852-2102N</b>   | DPDT        | <b>0862-2102N</b>   |
| ON                      | OFF | ON  | White/Red             | 125 Vac        | SPDT  |                 | <b>0852-2302N</b>   | DPDT        | <b>0862-2302N</b>   |
| ON                      | OFF | ON  | White/Green           | 125 Vac        | SPDT  |                 | <b>0852-2402N</b>   | DPDT        | <b>0862-2402N</b>   |
| ON                      | OFF | ON  | Red/Clear             | 125 Vac        | SPDT  |                 | <b>0852-2112N</b>   | DPDT        | <b>0862-2112N</b>   |
| ON                      | OFF | ON  | Black/Red             | 125 Vac        | SPDT  | 15 Amp, 125 Vac | <b>0852-2312N</b>   | DPDT        | <b>0862-2312N</b>   |
| ON                      | OFF | ON  | Black/Green           | 125 Vac        | SPDT  | 10 Amp, 250 Vac | <b>0852-2412N</b>   | DPDT        | <b>0862-2412N</b>   |
| ON                      | OFF | ON  | Red/Clear             | 125 Vac        | SPDT  | 3/4 HP, 125 Vac | <b>0852-2122N</b>   | DPDT        | <b>0862-2122N</b>   |
| ON                      | OFF | ON  | Red/Red               | 125 Vac        | SPDT  | 3/4 HP, 250 Vac | <b>0852-2322N</b>   | DPDT        | <b>0862-2322N</b>   |
| ON                      | OFF | ON  | Black/Clear           | 12 Vdc         | SPDT  |                 | <b>0852-4112N</b> ② | DPDT        | <b>0862-4112N</b> ② |
| ON                      | OFF | ON  | Black/Red             | 12 Vdc         | SPDT  |                 | <b>0852-4312N</b> ② | DPDT        | <b>0862-4312N</b> ② |
| ON                      | OFF | ON  | Black/Clear           | 28 Vdc         | SPDT  |                 | <b>0852-5112N</b> ② | DPDT        | <b>0862-5112N</b> ② |
| ON                      | OFF | ON  | Black/Red             | 28 Vdc         | SPDT  |                 | <b>0852-5312N</b> ② | DPDT        | <b>0862-5312N</b> ② |
| ON                      | —   | ON  | White/Clear           | 125 Vac        | SPST  |                 | <b>0852-2103N</b>   | DPST        | <b>0862-2103N</b>   |
| ON                      | —   | ON  | White/Red             | 125 Vac        | SPST  |                 | <b>0852-2303N</b>   | DPST        | <b>0862-2303N</b>   |
| ON                      | —   | ON  | White/Green           | 125 Vac        | SPST  | 15 Amp, 125 Vac | <b>0852-2403N</b>   | DPST        | <b>0862-2403N</b>   |
| ON                      | —   | ON  | Black/Clear           | 125 Vac        | SPST  | 10 Amp, 250 Vac | <b>0852-2113N</b>   | DPST        | <b>0862-2113N</b>   |
| ON                      | —   | ON  | Black/Red             | 125 Vac        | SPST  | 1/2 HP, 125 Vac | <b>0852-2313N</b>   | DPST        | <b>0862-2313N</b>   |
| ON                      | —   | ON  | Black/Green           | 125 Vac        | SPST  | 1/2 HP, 250 Vac | <b>0852-2413N</b>   | DPST        | <b>0862-2413N</b>   |
| ON                      | —   | ON  | Red/Clear             | 125 Vac        | SPST  |                 | <b>0852-2123N</b>   | DPST        | <b>0862-2123N</b>   |
| ON                      | —   | ON  | Red/Red               | 125 Vac        | SPST  |                 | <b>0852-2323N</b>   | DPST        | <b>0862-2323N</b>   |

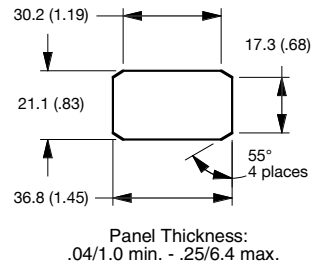
## Dimensions in Millimeters (Inches)



Side View



Top View



Mounting Hole

Poles: SP = single pole, DP = double pole, ST = single throw, DT = double throw.

① Lamp voltage determines switch voltage rating

② Not CSA or UL Approved

Shaded catalog numbers are normally stocked items. All other items are made to order. Contact your local sales representative for pricing.

# McGill™ 0801/0821 and 0811/0831 Series Rocker Switches

**NEC/CEC:**  
*Listed for Ordinary Locations*

## Applications

- Suitable for 20 Amp, 12 Vdc applications.
- Recognized for reliable, long service life by appliance manufacturers and manufacturers of industrial and commercial equipment.

## Features

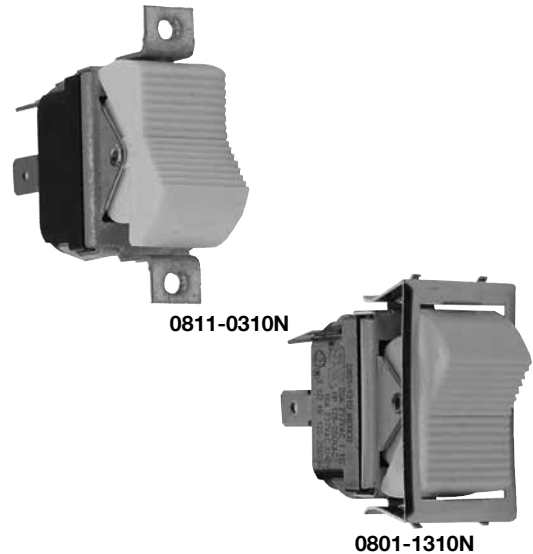
- Designed to fit full-size rectangular cutouts. Angled corners are suggested for optimum fit, but standard rectangular cutouts are acceptable.
- 1/4" Quick connect terminals standard on all switches.
- Multiple mounting styles - offset cover plate, metal snap-in bezel, nylon snap-in bezel.
- A wide variety of circuits are available to meet your specific requirements.
- McGill™ ensures extra reliability through mechanical excellence and a margin of electrical capacity - up to 20 Amps.
- White serrated gloss rocker style.

## Standard Materials

- Contacts: silver plate
- Terminals: brass or copper
- Base: phenolic +150 °C (+302 °F)
- Rocker and nylon bracket: nylon 66 +105 °C (+221 °F)
- Spring steel snap-in nickel plated bezel
- Black gloss nylon snap-in bezel

## NEC/CEC Certifications and Compliances

- UL Recognized Component
- UL File Number: E335442
- UL Standard: 1054, Guide WORY2
- CSA File Number: 249055
- CSA Standard: C22.2 No. 55
- RoHS Compliant



REELS AND SWITCHES: ORDINARY LOCATION SWITCHES

APPLETON™ OZ/GEDNEY™

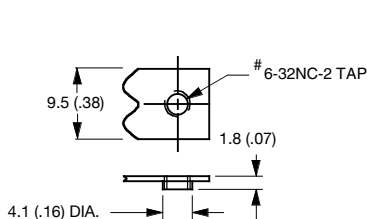
# McGill™ 0801/0821 and 0811/0831 Series Rocker Switches

NEC/CEC:  
Listed for Ordinary Locations

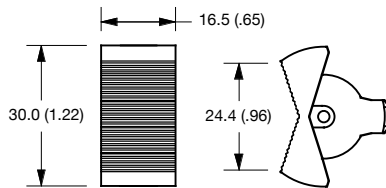
REELS AND SWITCHES: ORDINARY LOCATION SWITCHES

| Circuitry |     |       | Single Pole           |       |                     |   | Double Pole |                    |   |
|-----------|-----|-------|-----------------------|-------|---------------------|---|-------------|--------------------|---|
| A         | B   | C     | Mounting              | Poles | Catalog Number      | Rating  | Poles       | Catalog Number     | Rating  |
| ON        | —   | OFF   | Offset Coverplate     | SPST  | <b>0801-0310N</b>   |   | DPST        | <b>0811-0310N</b>  |   |
| ON        | —   | OFF   | Snap-in Bezel (Metal) | SPST  | <b>0801-1310N</b>   |   | DPST        | <b>0811-1310N</b>  |   |
| ON        | OFF | ON    | Offset Coverplate     | SPDT  | <b>0801-0311N</b>   |   | DPDT        | <b>0831-0311N</b>  |   |
| ON        | OFF | ON    | Snap-in Bezel (Metal) | SPDT  | <b>0801-1311N</b>   |   | DPDT        | <b>0831-1311N</b>  |   |
| ON        | —   | ON    | Offset Coverplate     | SPDT  | <b>0801-0312N</b>   |   | DPDT        | <b>0831-0312N</b>  |   |
| ON        | —   | ON    | Snap-in Bezel (Metal) | SPDT  | <b>0801-1312N</b>   | 15 Amp, 125 Vac<br>10 Amp, 250 Vac<br>3/4 HP, 125-250 Vac       | DPDT        | <b>0831-1312N</b>  | 15 Amp, 125 Vac<br>10 Amp, 250 Vac<br>3/4 HP, 250 Vac           |
| (ON)      | —   | OFF   | Offset Coverplate     | SPST  | <b>0821-0313N</b>   |   | DPST        | <b>0831-0313N</b>  |   |
| (ON)      | —   | OFF   | Snap-in Bezel (Metal) | SPST  | <b>0821-1313N</b>   |   | DPST        | <b>0831-1313N</b>  |   |
| (ON)      | OFF | (ON)  | Offset Coverplate     | SPDT  | <b>0821-0314N</b>   |   | DPDT        | <b>0831-0314N</b>  |   |
| (ON)      | OFF | (ON)  | Snap-in Bezel (Metal) | SPDT  | <b>0821-1314N</b>   |   | DPDT        | <b>0831-1314N</b>  |   |
| (ON)      | OFF | ON    | Offset Coverplate     | SPDT  | <b>0821-0316N</b>   |   | DPDT        | <b>0831-0316N</b>  |   |
| (ON)      | OFF | ON    | Snap-in Bezel (Metal) | SPDT  | <b>0821-1316N</b>   |   | DPDT        | <b>0831-1316N</b>  |   |
| ON        | —   | (OFF) | Offset Coverplate     | SPST  | <b>0821-0317N</b> † |   | DPST        | <b>0831-0317N</b>  |   |
| ON        | —   | (OFF) | Snap-in Bezel (Metal) | SPST  | <b>0821-1317N</b> † | 15 Amp, 125 Vac<br>10 Amp, 250 Vac<br>3/4 HP, 250 Vac           | DPST        | <b>0831-1317N</b>  | 15 Amp, 125 Vac<br>10 Amp, 250 Vac<br>3/4 HP, 250 Vac           |
| (ON)      | —   | ON    | Offset Coverplate     | SPDT  | <b>0821-0318N</b>   |   | DPDT        | <b>0831-0318N</b>  |   |
| (ON)      | —   | ON    | Snap-in Bezel (Metal) | SPDT  | <b>0821-1318N</b>   |   | DPDT        | <b>0831-1318N</b>  |   |
| ON        | —   | OFF   | Snap-in Bezel (Nylon) | SPST  | <b>0801-1310AN</b>  | 20 Amp, 120-277 Vac   | DPST        | <b>0811-1310AN</b> | 20 Amp, 120-277 Vac<br>1-1/2 HP, 125 Vac<br>3/4 HP, 125-250 Vac |
| ON        | OFF | ON    | Snap-in Bezel (Nylon) | SPDT  | <b>0801-1311AN</b>  | 20 Amp, 120-277 Vac<br>1-1/2 HP, 125 Vac<br>3/4 HP, 125-250 Vac | DPDT        | <b>0831-1311AN</b> | 20 Amp, 120-277 Vac<br>1-1/2 HP, 125 Vac<br>3/4 HP, 125-250 Vac |
| ON        | —   | ON    | Snap-in Bezel (Nylon) | SPDT  | <b>0801-1312AN</b>  |   | DPDT        | <b>0831-1312AN</b> |   |

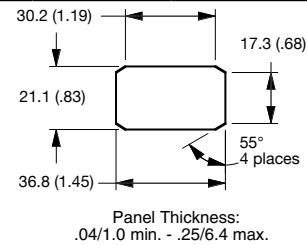
## Dimensions in Millimeters (Inches)



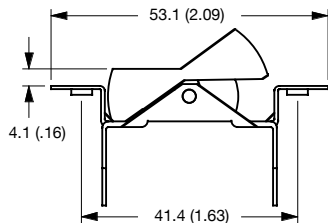
Tapped Hole



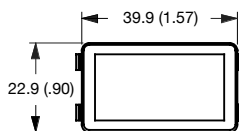
Rocker Switch



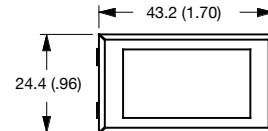
Mounting Hole



Offset Coverplate



Metal Snap-in Bezel



Nylon Snap-in Bezel

( ) Momentary. Poles: SP = single pole, DP = double pole, ST = single throw, DT = double throw.

† Not CSA or UL Approved.

Shaded catalog numbers are normally stocked items. All other items are made to order. Contact your local sales representative for pricing.



# McGill™ 0851/0861 Series Lighted Rocker Switches

## Black Bezel, White Rocker, Red Lens

NEC/CEC:  
Listed for Ordinary Locations

### Applications

- Recognized for reliable, long service life by appliance manufacturers and manufacturers of industrial and commercial equipment.

### Features

- Designed to fit full-size rectangular cutouts. Angled corners are suggested for optimum fit, but standard rectangular cutouts are acceptable.
- Curved rockers with illuminated single or dual lens to fit your style and functional requirements.
- 1/4" Quick connect terminals standard on all switches.
- A variety of circuits are available to meet your specific requirements.
- 125 Vac incandescent lamp standard.
- Rocker style: white smooth gloss.
- Black gloss nylon snap-in bezel.

### Standard Materials

- Contacts: silver plate
- Terminals: brass or copper
- Base: phenolic +150 °C (+302 °F)
- Rocker and nylon bracket: nylon 66 +105 °C (+221 °F)

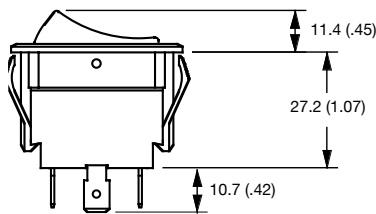


### NEC/CEC Certifications and Compliances

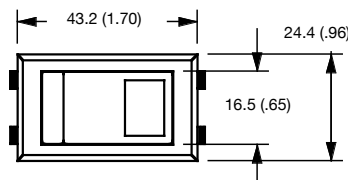
- UL Recognized Component
- UL File Number: E335442
- UL Standard: 1054, Guide WORY2
- CSA File Number: 249055
- CSA Standard: C22.2 No. 55
- RoHS Compliant

| Circuitry |     |       | Single Pole |                |       |                     | Double Pole  |       |                     |                 |
|-----------|-----|-------|-------------|----------------|-------|---------------------|--|-------|---------------------|-----------------|
| A         | B   | C     | Lights      | Lamp Voltage ① | Poles | Catalog Number      | Rating   | Poles | Catalog Number      | Rating          |
| ON        | —   | OFF   | —           | —              | SPDT  | <b>0861-0001N</b>   | 15 Amp, 125 Vac<br>10 Amp, 250 Vac<br>1/2 HP, 125 Vac<br>1/2 HP, 250 Vac | —     | —                   | —               |
| ON        | —   | OFF   | 1           | 125 Vac        | SPST  | <b>0851-1301N</b>   |  | DPST  | <b>0861-1301N</b>   |                 |
| ON        | —   | ON    | 2           | 125 Vac        | SPDT  | <b>0851-2303N</b>   | 15 Amp, 125 Vac  | DPDT  | <b>0861-2303N</b>   | 15 Amp, 125 Vac |
| (ON)      | —   | OFF   | 1           | 125 Vac        | SPST  | <b>0851-1304N</b>   | 10 Amp, 250 Vac  | DPST  | <b>0861-1304N</b> ② | 10 Amp, 250 Vac |
| ON        | —   | (OFF) | 1           | 125 Vac        | SPST  | <b>0851-1307N</b>   | 1/2 HP, 125 Vac  | DPST  | <b>0861-1307N</b> ② | 3/4 HP, 250 Vac |
| (ON)      | —   | ON    | 2           | 125 Vac        | SPDT  | <b>0851-2308N</b>   | 1/2 HP, 250 Vac  | DPDT  | <b>0861-2308N</b> ② |                 |
| ON        | OFF | ON    | 2           | 125 Vac        | SPDT  | <b>0851-2302N</b>   | 15 Amp, 125 Vac  | DPDT  | <b>0861-2302N</b>   | 15 Amp, 125 Vac |
| (ON)      | OFF | (ON)  | 2           | 125 Vac        | SPDT  | <b>0851-2305N</b> ② | 10 Amp, 250 Vac  | DPDT  | <b>0861-2305N</b> ② | 10 Amp, 250 Vac |
| (ON)      | OFF | ON    | 2           | 125 Vac        | SPDT  | <b>0851-2306N</b> ② | 3/4 HP, 125 Vac<br>3/4 HP, 250 Vac                                       | DPDT  | <b>0861-2306N</b> ③ | 3/4 HP, 250 Vac |

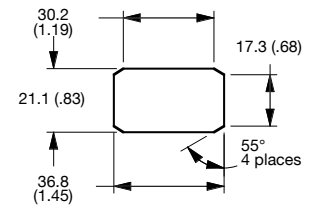
### Dimensions in Millimeters (Inches)



Side View



Top View



Panel Thickness:  
.04/1.0 min. - .25/6.4 max.  
Mounting Hole

( ) Momentary. Poles: SP = single pole, DP = double pole, ST = single throw, DT = double throw.

① Lamp voltage determines switch volume rating.

② Not CSA or UL Approved.

③ Not CSA Approved.

Shaded catalog numbers are normally stocked items. All other items are made to order. Contact your local sales representative for pricing.

# McGill™ 4125/90 Series Single Pole Toggle Switches

NEC/CEC:  
Listed for Ordinary Locations

## Applications

- McGill™ full-size, single pole toggle switches are available in several electrical ratings to meet a variety of requirements.
- Ruggedly constructed with metallic toggle and threaded bushing to ensure extended service life.
- Marine, food service, generator, industrial control and office automation markets.
- Appropriate for use in low voltage DC applications.

## Features

- A variety of circuits are available.
- Available with screw, solder, and 1/4" Quick connect terminals.
- Mounting hardware and terminal screws (where applicable) furnished unassembled.
- Mounting hardware consists of nickel plated hex nut and knurled nut.
- Indicating plate is furnished for maintained ON-OFF circuits.

## Standard Materials

- Base: phenolic +150 °C (+302 °F)
- Bat handle: nickel plated brass
- Bushing: nickel plated brass

## NEC/CEC Certifications and Compliances

- UL Recognized Component
- UL File Number: E335442
- UL Standard: 1054, Guide WORY2
- CSA File Number: 249055
- CSA Standard: C22.2 No. 55
- RoHS Compliant



REELS AND SWITCHES: ORDINARY LOCATION SWITCHES

APPLETON™ OZ/GEDNEY™

| Circuitry     |     |      | Screw Term. |                   |  | Solder Term. |                   |  |
|---------------|-----|------|-------------|-------------------|--|--------------|-------------------|--|
| A             | B   | C    | Poles       | Catalog Number    | Rating   | Poles        | Catalog Number    | Rating   |
| <b>10 Amp</b> |     |      |             |                   |  |              |                   |  |
| ON            | —   | OFF  | SPST        | <b>4125-0001N</b> | 10 Amp, 125 Vac/Vdc<br>5 Amp, 250 Vac/Vdc<br>1/4 HP, 125 Vac/Vdc | SPST         | <b>4125-0002N</b> | 10 Amp, 125 Vac/Vdc<br>5 Amp, 250 Vac/Vdc<br>1/4 HP, 125 Vac/Vdc |
| <b>15 Amp</b> |     |      |             |                   |  |              |                   |  |
| ON            | OFF | ON   | SPDT        | <b>91-0001N</b>   | 15 Amp, 125 Vac<br>10 Amp, 250 Vac<br>3/4 HP, 120-240 Vac        | SPDT         | <b>91-0002N</b>   | 15 Amp, 125 Vac<br>10 Amp, 250 Vac<br>3/4 HP, 120-240 Vac        |
| ON            | —   | ON   | SPDT        | <b>92-0001N</b>   |  | SPDT         | <b>92-0002N</b>   |  |
| (ON)          | OFF | (ON) | SPDT        | <b>93-0001N</b>   |  | SPDT         | <b>93-0002N</b>   |  |
| ON            | OFF | (ON) | SPDT        | <b>93-1001N</b>   |  | SPDT         | <b>93-1002N</b>   |  |
| (OFF)         | —   | ON   | SPST        | <b>93-2001N</b>   |  | SPST         | <b>93-2002N</b>   |  |
| (ON)          | —   | OFF  | SPST        | <b>93-3001N</b>   |  | SPST         | <b>93-3002N</b>   |  |
| ON            | —   | (ON) | SPDT        | <b>93-4001N</b>   |  | SPDT         | <b>93-4002N</b>   |  |
| <b>20 Amp</b> |     |      |             |                   |  |              |                   |  |
| ON            | —   | OFF  | SPST        | <b>90-0001N</b>   | 20 Amp, 125 Vac<br>12 Amp, 250 Vac<br>1 HP, 120-240 Vac          | SPST         | <b>90-0002N</b>   | 20 Amp, 125 Vac<br>12 Amp, 250 Vac<br>1 HP, 120-240 Vac          |

( ) Momentary. Poles: SP = single pole, DP = double pole, ST = single throw, DT = double throw.

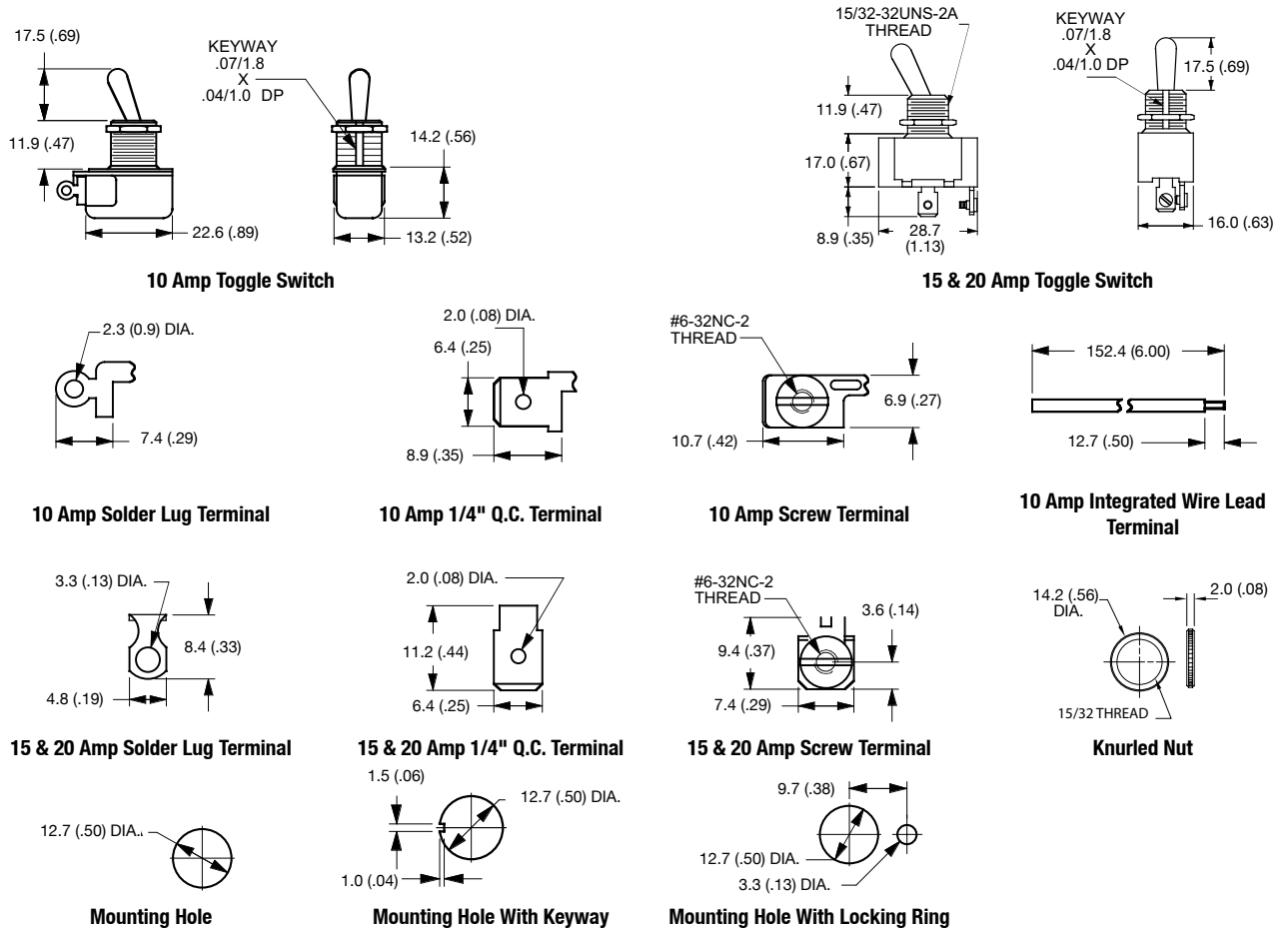
Shaded catalog numbers are normally stocked items. All other items are made to order. Contact your local sales representative for pricing.

# McGill™ 4125/90 Series Single Pole Toggle Switches

NEC/CEC:  
Listed for Ordinary Locations

| Circuitry     |     |      | 1/4" Q.C. Term. |                   |  | 6" Wire Leads |                   |  |
|---------------|-----|------|-----------------|-------------------|--|---------------|-------------------|--|
| A             | B   | C    | Poles           | Catalog Number    | Rating   | Poles         | Catalog Number    | Rating   |
| <b>10 Amp</b> |     |      |                 |                   |  |               |                   |  |
| ON            | —   | OFF  | SPST            | <b>4125-0003N</b> | 10 Amp, 125 Vac/Vdc<br>5 Amp, 250 Vac/Vdc<br>1/4 HP, 125 Vac/Vdc | SPST          | <b>4125-0004N</b> | 10 Amp, 125 Vac/Vdc<br>5 Amp, 250 Vac/Vdc<br>1/4 HP, 125 Vac/Vdc |
| <b>15 Amp</b> |     |      |                 |                   |  |               |                   |  |
| ON            | OFF | ON   | SPDT            | <b>91-0003N</b>   |  | —             | —                 | —  |
| ON            | —   | ON   | SPDT            | <b>92-0003N</b>   |  | —             | —                 | —  |
| (ON)          | OFF | (ON) | SPDT            | <b>93-0003N</b>   | 15 Amp, 125 Vac  | —             | —                 | —  |
| ON            | OFF | (ON) | SPDT            | <b>93-1003N</b>   | 10 Amp, 250 Vac  | —             | —                 | —  |
| (OFF)         | —   | ON   | SPST            | <b>93-2003N</b>   | 3/4 HP, 120-240 Vac  | —             | —                 | —  |
| (ON)          | —   | OFF  | SPST            | <b>93-3003N</b>   |  | —             | —                 | —  |
| ON            | —   | (ON) | SPDT            | <b>93-4003N</b>   |  | —             | —                 | —  |
| <b>20 Amp</b> |     |      |                 |                   |  |               |                   |  |
| ON            | —   | OFF  | SPST            | <b>90-0003N</b>   | 20 Amp, 125 Vac<br>12 Amp, 250 Vac<br>1 HP, 120-240 Vac          | —             | —                 | —  |

## Dimensions in Millimeters (Inches)



( ) Momentary. Poles: SP = single pole, DP = double pole, ST = single throw, DT = double throw.

Shaded catalog numbers are normally stocked items. All other items are made to order. Contact your local sales representative for pricing.

# McGill™ 0121/0140 Series Multi-Pole Toggle Switches

NEC/CEC:  
Listed for Ordinary Locations

## Applications

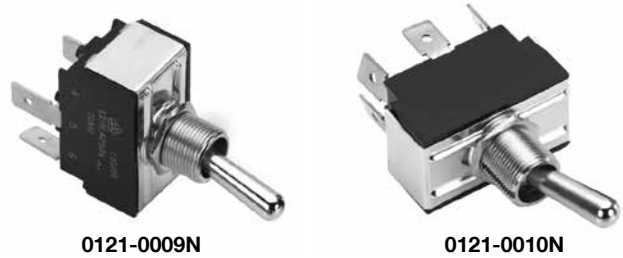
- McGill™ full-size, single pole toggle switches are available in several electrical ratings to meet a variety of requirements.
- Ruggedly constructed with metallic toggle and threaded bushing to ensure extended service life.
- Marine, food service, generator, industrial control and office automation markets.

## Features

- A variety of circuits are available.
- Available with screw, solder, and 1/4" quick connect terminals.
- Mounting hardware and terminal screws (where applicable) furnished unassembled.
- Mounting hardware consists of nickel plated hex nut and knurled nut.
- Indicating plate is furnished for maintained ON-OFF circuits.

## Standard Materials

- Base: phenolic +150 °C (+302 °F)
- Bat handle: nickel plated brass
- Bushing: nickel plated brass



## NEC/CEC Certifications and Compliances

- UL Recognized Component
- UL File Number: E335442
- UL Standard: 1054, Guide WORY2
- CSA File Number: 249055
- CSA Standard: C22.2 No. 55
- RoHS Compliant

REELS AND SWITCHES: ORDINARY LOCATION SWITCHES

APPLETON™ OZ/GEDNEY™

| Circuitry              |     |       | Screw Terminal |                | Solder Terminal |                | 1/4" Q.C. Terminal |                | Rating   |
|------------------------|-----|-------|----------------|----------------|-----------------|----------------|--------------------|----------------|--|
| A                      | B   | C     | Poles          | Catalog Number | Poles           | Catalog Number | Poles              | Catalog Number |  |
| <b>15 Amp, 2 Poles</b> |     |       |                |                |                 |                |                    |                |  |
| ON                     | —   | OFF   | DPST           | 0121-0001N     | DPST            | 0121-0017N     | DPST               | 0121-0009N     | 15 Amp, 125 Vac<br>10 Amp, 250 Vac<br>3/4 HP, 250 Vac  |
| ON                     | —   | ON    | DPDT           | 0121-0003N     | DPDT            | 0121-0019N     | DPDT               | 0121-0011N     |  |
| (ON)                   | —   | OFF   | DPST           | 0121-0005N     | DPST            | 0121-0021N     | DPST               | 0121-0013N     |  |
| ON                     | —   | (ON)  | DPDT           | 0121-0006N     | DPDT            | 0121-0022N     | DPDT               | 0121-0014N     |  |
| (OFF)                  | —   | ON    | DPST           | 0121-0043N     | DPST            | 0121-0045N     | DPST               | 0121-0044N     | 15 Amp, 125 Vac<br>10 Amp, 250 Vac<br>3/4 HP, 125-250 Vac  |
| ON                     | OFF | ON    | DPDT           | 0121-0002N     | DPDT            | 0121-0018N     | DPDT               | 0121-0010N     |  |
| (ON)                   | OFF | (ON)  | DPDT           | 0121-0004N     | DPDT            | 0121-0020N     | DPDT               | 0121-0012N     |  |
| ON                     | OFF | (ON)  | DPDT           | 0121-0007N     | DPDT            | 0121-0023N     | DPDT               | 0121-0015N     |  |
| (ON)                   | ON  | ON    | SPTT           | —              | SPTT            | —              | SPTT               | 0127-0001N ①   |  |
| <b>17 Amp, 3 Pole</b>  |     |       |                |                |                 |                |                    |                |  |
| ON                     | —   | OFF   | 3PST           | 0140-3020N     | 3PST            | 0140-3010N     | 3PST               | 0140-3000N     | 6 Amp, 600 Vac<br>17 Amp, 125 Vac<br>12 Amp, 250 Vac<br>2 HP, 480-600 Vac<br>3 Phase                         |
| (ON)                   | —   | OFF   | 3PST           | 0140-3021N     | 3PST            | 0140-3011N     | 3PST               | 0140-3001N     | 6 Amp, 600 Vac<br>17 Amp, 125 Vac<br>12 Amp, 250 Vac<br>1-1/2 HP, 240 Vac<br>1,2 or 3 Phase                  |
| ON                     | —   | (OFF) | 3PST           | 0140-3022N     | 3PST            | 0140-3012N     | 3PST               | 0140-3002N     | 1,2 or 3 Phase<br>2 HP, 480-600 Vac<br>3 Phase   |
| ON                     | —   | ON    | 3PDT           | 0140-3024N     | 3PDT            | 0140-3014N     | 3PDT               | 0140-3004N     |  |
| ON                     | —   | (ON)  | 3PDT           | 0140-3025N     | 3PDT            | 0140-3015N     | 3PDT               | 0140-3005N     |  |
| ON                     | OFF | ON    | 3PDT           | 0140-3023N     | 3PDT            | 0140-3013N     | 3PDT               | 0140-3003N     | 6 Amp, 600 Vac<br>17 Amp, 125 Vac<br>12 Amp, 250 Vac<br>1 HP, 125 Vac<br>1-1/2 HP, 250 Vac<br>1,2 or 3 Phase |
| ON                     | OFF | (ON)  | 3PDT           | 0140-3026N     | 3PDT            | 0140-3016N     | 3PDT               | 0140-3006N     | 1,2 or 3 Phase<br>2 HP, 480-600 Vac<br>3 Phase   |
| (ON)                   | OFF | (ON)  | 3PDT           | 0140-3027N     | 3PDT            | 0140-3017N     | 3PDT               | 0140-3007N     |  |

( ) Momentary. Poles: SP = single pole, DP = double pole, ST = single throw, DT = double throw, TT = triple throw.

① Not UL or CSA Listed.

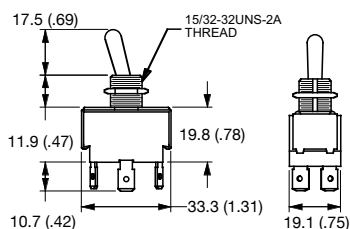
Shaded catalog numbers are normally stocked items. All other items are made to order. Contact your local sales representative for pricing.

# McGill™ 0121/0140 Series Multi-Pole Toggle Switches

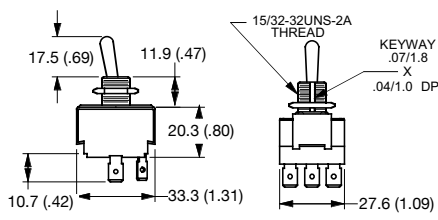
NEC/CEC:  
Listed for Ordinary Locations

| Circuitry             |     |       | Screw Terminal |                     | Solder Terminal |                     | 1/4" Q.C. Terminal |                     | Rating              |
|-----------------------|-----|-------|----------------|---------------------|-----------------|---------------------|--------------------|---------------------|---------------------|
| A                     | B   | C     | Poles          | Catalog Number      | Poles           | Catalog Number      | Poles              | Catalog Number      |                     |
| <b>15 Amp, 4 Pole</b> |     |       |                |                     |                 |                     |                    |                     |                     |
| ON                    | —   | OFF   | 4PST           | <b>0140-4020N</b>   | 4PST            | <b>0140-4010N</b>   | 4PST               | <b>0140-4000N</b>   |                     |
| (ON)                  | —   | OFF   | 4PST           | <b>0140-4021N</b> ① | 4PST            | <b>0140-4011N</b> † | 4PST               | <b>0140-4001N</b> ① | 15 Amp, 125 Vac     |
| ON                    | —   | (OFF) | 4PST           | <b>0140-4022N</b> ① | 4PST            | <b>0140-4012N</b> † | 4PST               | <b>0140-4002N</b> ① | 10 Amp, 250 Vac     |
| ON                    | —   | ON    | 4PDT           | <b>0140-4024N</b>   | 4PDT            | <b>0140-4014N</b>   | 4PDT               | <b>0140-4004N</b>   | 3/4 HP, 250 Vac     |
| ON                    | —   | (ON)  | 4PDT           | <b>0140-4025N</b>   | 4PDT            | <b>0140-4015N</b>   | 4PDT               | <b>0140-4005N</b>   | 1,2 or 3 Phase      |
| ON                    | OFF | ON    | 4PDT           | <b>0140-4023N</b>   | 4PDT            | <b>0140-4013N</b>   | 4PDT               | <b>0140-4003N</b>   | 15 Amp, 125 Vac     |
| ON                    | OFF | (ON)  | 4PDT           | <b>0140-4026N</b> ① | 4PDT            | <b>0140-4016N</b> † | 4PDT               | <b>0140-4006N</b> ① | 10 Amp, 250 Vac     |
| (ON)                  | OFF | (ON)  | 4PDT           | <b>0140-4027N</b>   | 4PDT            | <b>0140-4017N</b>   | 4PDT               | <b>0140-4007N</b>   | 3/4 HP, 125-250 Vac |
|                       |     |       |                |                     |                 |                     |                    |                     | 1,2 or 3 Phase      |

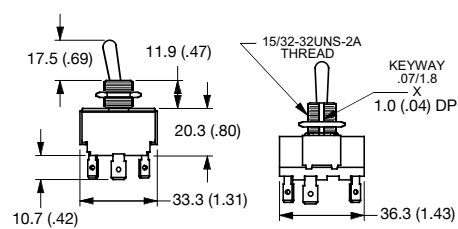
## Dimensions in Millimeters (Inches)



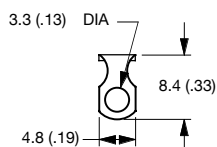
15 Amp, 2 Pole



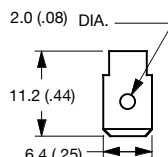
17 Amp, 3 Pole



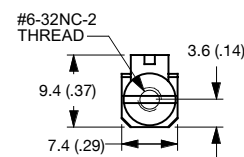
17 Amp, 4 Pole



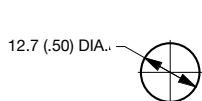
Solder Lug Terminal



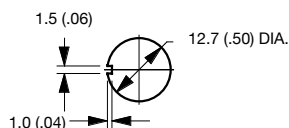
1/4" Q.C. Terminal



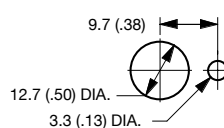
Screw Terminal



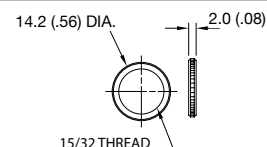
Mounting Hole



Mounting Hole With Keyway



Mounting Hole With Locking Ring



Knurled Nut

( ) Momentary. Poles: SP = single pole, DP = double pole, ST = single throw, DT = double throw.  
① Not UL or CSA Listed.

Shaded catalog numbers are normally stocked items. All other items are made to order. Contact your local sales representative for pricing.

# McGill™ Momentary Contact Pushbutton Switches

NEC/CEC:  
Listed for Ordinary Locations

## Applications

- Single pole, high amperage – suitable for back panel applications.

## Features

- Rugged switch mechanism ensures long life.
- Screw terminal.
- Mounting hardware consists of nickel plated hex nut and knurled nut.

## Standard Materials

- Base: phenolic +150 °C (+302 °F)
- Bushing: nickel plated brass
- Push button: black plastic cap

## NEC/CEC Certifications and Compliances

- UL Recognized Component
- UL File Number: E335442
- UL Standard: 1054, Guide WORY2
- CSA File Number: 249055
- CSA Standard: C22.2 No. 55
- RoHS Compliant

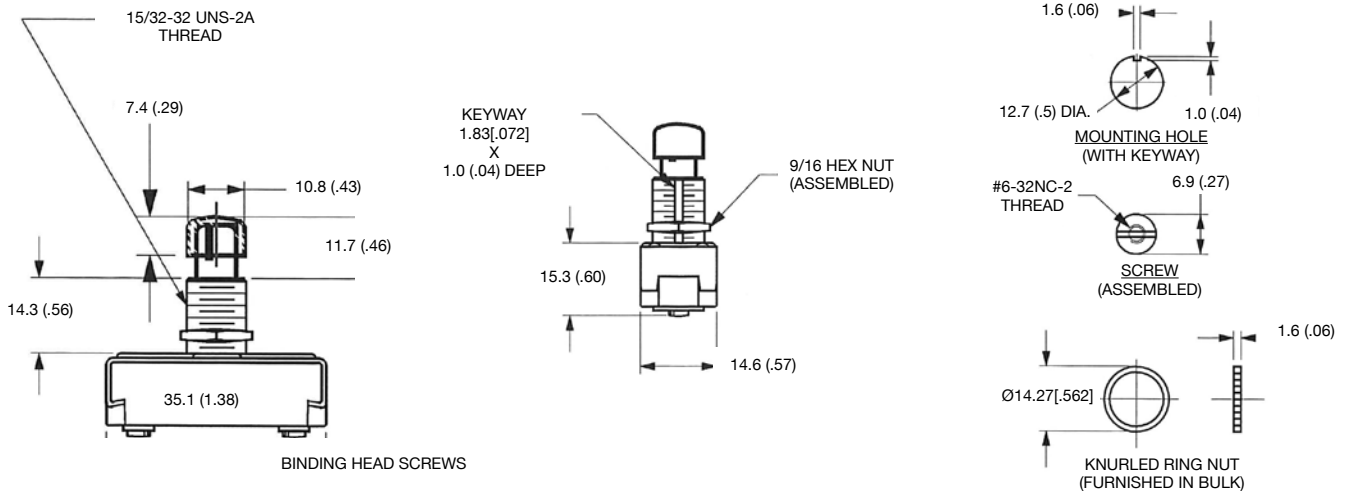


REELS AND SWITCHES: ORDINARY LOCATION SWITCHES

APPLETON™ OZ/GEDNEY™

| Circuitry |   |      | Poles | Ratings                            | Terminal Type | Catalog Number |
|-----------|---|------|-------|------------------------------------|---------------|----------------|
| A         | B | C    |       |                                    |               |                |
| OFF       | — | (ON) | SPST  | 15 Amp, 125 Vac<br>10 Amp, 250 Vac | Screw         | <b>100N</b>    |









## Dimensions in Millimeters (Inches)



( ) Momentary.

# McGill™ Switches – Parts and Accessories

NEC/CEC:  
Listed for Ordinary Locations

|   | Description   | Catalog Number |
|---|---|----------------|
|    | Indicating plate ON-OFF                                     | 1650           |
|    | Knurled nut .563" O.D. x .078" thick, 15/32" thread         | 1575           |
|    | Hex nut 15/32" thread x .073" thick                         | 1610-2         |
|    | Internal tooth lockwasher .472" I.D. x .593" O.D.           | 1957           |
|    | Locking ring .722" O.D. x .478" I.D. x .031" thick          | 25494          |
|    | Rubber boot with nut for toggle switches, 15/32" thread     | 0090-9988      |
|   | Rubber boot for toggle switches, snaps over toggle and nut  | 0090-9986      |
|  | Rubber boot with nut for pushbutton switches, 15/32" thread | 0090-9973      |

REELS AND SWITCHES: ORDINARY LOCATION SWITCHES

APPLETON™ OZ/GEDNEY™